



chanticleer



# Ruin Garden

Map & Plant Lists • May 2026  
\$2 each

Maps and plant lists may be purchased at the garden entrance or downloaded for free at [chanticleergarden.org](http://chanticleergarden.org).

☉ sun    ☉ partial shade    ● full shade



*Asarum splendens*

Herbaceous Perennial

Beds 5 and 8



*Athyrium niponicum* var. *pictum*

Fern

Beds 4, 5, 6



*Baptisia australis*

Herbaceous Perennial

Bed 42



*Bletilla striata* 'Big Bob'

Herbaceous Perennial

Bed 7



*Clematis* 'Mikolaj Kopernick'

Climber

Beds 16B and 42



*Clematis* [Samaritanian Jo]

Herbaceous Perennial

Bed 40



*Lychnis* x *artwrightii*

Herbaceous Perennial

Beds 16A and 16B



*Papaver rupifragum*

Biennial

Beds 16A and 16B



*Picea abies* 'Pendul'

Tree

Beds 42 and 48



*Schizophragma hydrangeoides*

Woody Climber

Bed 7



*Sporobolus heterolepis*

Grass

Beds 40, 42, and 48



*Syneilesis acontifolia*

Herbaceous Perennial

Beds 4 and 6





chanticleer



# Ruin Garden

Map & Plant Lists • April 2026  
\$2 each

Maps and plant lists may be purchased at the garden entrance or downloaded for free at [chanticleergarden.org](http://chanticleergarden.org).

☉ sun    ◐ partial shade    ● full shade



*Acer palmatum* 'Sango kaku'

Tree

Beds 40, 45, and 48



*Arum italicum* subsp. *italicum*  
'Czech types'

Bulb

Beds 5 and 8



*Asarum splendens*

Herbaceous Perennial

Beds 4, 5, 6



*Bellevia pycnantha*

Bulb

Beds 16A and 16B



*Fritillaria persica*

Bulb

Bluestone Trough



*Fritillaria thunbergii*

Bulb

Bed 11



*Geranium maculatum* 'Espresso'

Herbaceous Perennial

Beds 16A and 16B



*Hedera colchica* 'Sulphur Heart'

Woody Vine

Bed 14



*Narcissus* 'Jetfire'

Bulb

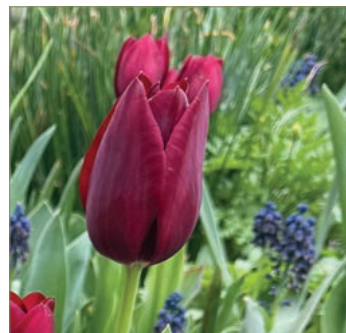
Beds 16A and 16B



*Prunus* 'Dreamcatcher'

Tree

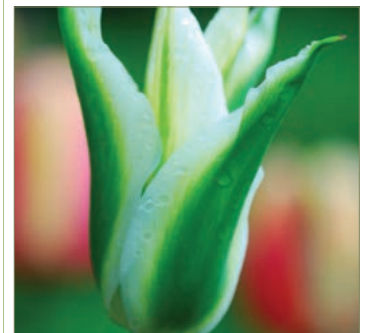
Bed 42



*Tulipa* 'National Velvet'

Bulb

Beds 16A and 16B



*Tulipa* 'Spring Green'

Bulb

Beds 4, 5, and 7



ruin garden container list, 4/01/26

---

**Bluestone Trough**

*Anemone blanda* 'Blue Shades'

*Erysimum* x *marshallii* (syn. *Cheiranthus allionii*)

*Seseli gummiferum*

*Tulipa turkestanica*

*Viola cornuta* [Sorbet® XP Neptune] =  
'PAS1122571'

**Spring Mantle (mounted on the wall facing the reflecting table)**

*Euphorbia myrsinites*

*Muscari armeniacum*

*Muscari armeniacum* 'Valerie Finnis'

*Myosotis alpestris*

*Myosotis sylvatica*

*Narcissus* 'Sun Disc'

*Viola cornuta* [Sorbet® XP Neptune] =  
'PAS1122571'

**Broken Pot in Bed 16A**

*Erysimum* 'Fire King'

*Fritillaria persica*

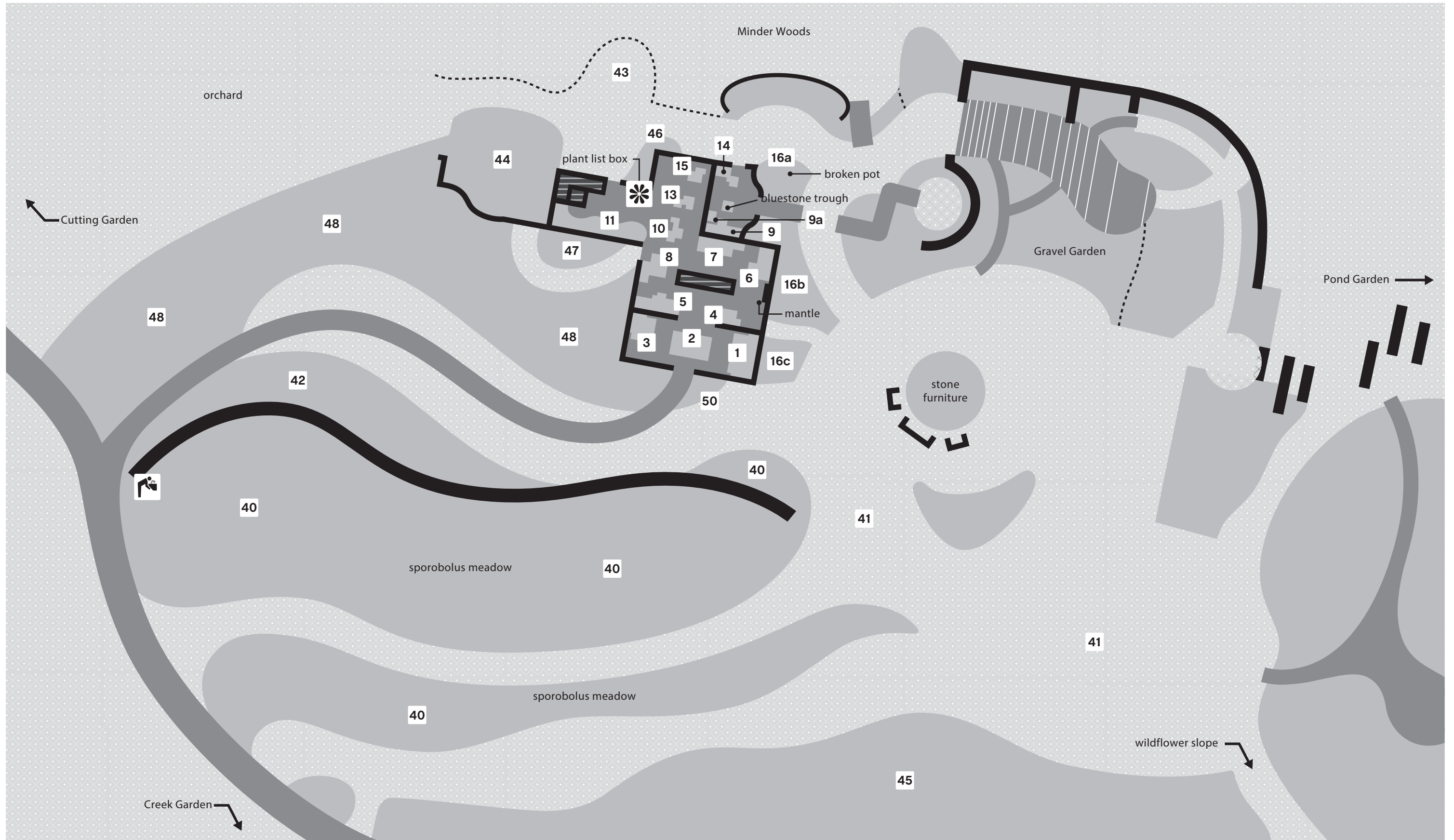
*Muscari armeniacum*

*Tulipa clusiana* 'Tubergen's Gem'

**Wall Pockets**

*Fritillaria persica*

# Ruin Garden



- lawn
- planting beds
- water
- walkways
- structures

## garden bed plant list hardy and non-hardy plants growing in the ruin garden, 3/25/26

location	botanical name
Bed 01	Adonis amurensis 'Fukujukai'
Bed 01	Athyrium niponicum var. pictum
Bed 01	Carex conica 'Snowline'
Bed 01	Cercis canadensis
Bed 01	Epimedium 'Pink Champagne'
Bed 01	Erythronium 'Pagoda'
Bed 01	Hedera nepalensis 'Marbled Dragon'
Bed 01	Heuchera villosa var. macrorrhiza
Bed 01	Jeffersonia dubia
Bed 01	Tulipa (Lily-flowered Group) 'Green Star'
Bed 01	Tulipa (Lily-flowered Group) 'White Triumphator'
Bed 01	Tulipa (Triumph Group) 'Bastogne'
Bed 01	Tulipa (Triumph Group) 'National Velvet'
Bed 01	Tulipa (Viridiflora Group) 'Spring Green'
Bed 02	Carex conica 'Snowline'
Bed 02	Claytonia virginica 'Laurel's Luscious'
Bed 02	Dryopteris affinis 'Crispa Gracilis'
Bed 02	Epimedium stellulatum 'Wudang Star'
Bed 02	Epimedium 'Wine Spritzer'
Bed 02	Erythronium 'Pagoda'
Bed 02	Heuchera villosa var. macrorrhiza
Bed 02	Jeffersonia dubia
Bed 02	Polypodium vulgare 'Uulong Island'
Bed 02	Quercus alba
Bed 02	Sedum ternatum 'Larinem Park'
Bed 02	Selaginella moellendorffii
Bed 02	Thalictrum thalictroides
Bed 02	Tulipa (Viridiflora Group) 'Spring Green'
Bed 03	Acer palmatum 'Bloodgood'
Bed 03	Adonis amurensis 'Fukujukai'
Bed 03	Athyrium niponicum var. pictum
Bed 03	Erythronium 'Pagoda'
Bed 03	Heuchera villosa var. macrorrhiza
Bed 03	Jeffersonia dubia
Bed 03	Tulipa (Lily-flowered Group) 'Green Star'
Bed 03	Tulipa (Lily-flowered Group) 'White Triumphator'
Bed 03	Tulipa (Triumph Group) 'Bastogne'
Bed 03	Tulipa (Triumph Group) 'National Velvet'
Bed 03	Tulipa (Viridiflora Group) 'Spring Green'
Bed 04	Ajuga reptans 'Catlin's Giant'
Bed 04	Aristolochia tomentosa
Bed 04	Arum italicum ssp. italicum 'Ghost'
Bed 04	Asarum splendens 'Quicksilver'
Bed 04	Buxus sempervirens 'Dee Runk'
Bed 04	Carex comans
Bed 04	Carex conica 'Snowline'
Bed 04	Epimedium 'Pink Champagne'
Bed 04	Fritillaria meleagris 'Alba'
Bed 04	Hedera helix 'Elfenbein'
Bed 04	Helleborus niger 'HGC Jacob'
Bed 04	Heuchera villosa 'Brownies'
Bed 04	Lilium 'Fairy Morning'
Bed 04	Ophiopogon japonicus
Bed 04	Ophiopogon planiscapus 'Nigrescens'
Bed 04	Papaver rupifragum
Bed 04	Quercus alba

## garden bed plant list hardy and non-hardy plants growing in the ruin garden, 3/25/26

location	botanical name
Bed 04	<i>Syneilesis aconitifolia</i>
Bed 04	<i>Tulipa</i> (Lily-flowered Group) 'Green Star'
Bed 04	<i>Tulipa</i> (Lily-flowered Group) 'White Elegance'
Bed 04	<i>Tulipa</i> (Lily-flowered Group) 'White Triumphator'
Bed 04	<i>Tulipa</i> (Single Late Group) 'Queen of Night'
Bed 04	<i>Tulipa</i> (Triumph Group) 'National Velvet'
Bed 04	<i>Tulipa</i> (Viridiflora Group) 'Spring Green'
Bed 05	<i>Arum italicum</i> ssp. <i>italicum</i> Czech types
Bed 05	<i>Asarum splendens</i> 'Quicksilver'
Bed 05	<i>Athyrium niponicum</i> var. <i>pictum</i>
Bed 05	<i>Buxus sempervirens</i> 'Dee Runk'
Bed 05	<i>Carex conica</i> 'Snowline'
Bed 05	<i>Chamaecyparis obtusa</i> 'Dainty Doll'
Bed 05	<i>Chamaecyparis obtusa</i> 'Lycopodioides'
Bed 05	<i>Clematis addisonii</i>
Bed 05	<i>Dryopteris x australis</i>
Bed 05	<i>Epimedium</i> sp. 'Tarantula'
Bed 05	<i>Fritillaria meleagris</i> 'Alba'
Bed 05	<i>Helleborus niger</i> 'HGC Josef Lemper'
Bed 05	<i>Quercus alba</i>
Bed 05	<i>Tiarella cordifolia</i> 'Brandywine'
Bed 05	<i>Tulipa</i> (Lily-flowered Group) 'Green Star'
Bed 05	<i>Tulipa</i> (Lily-flowered Group) 'White Elegance'
Bed 05	<i>Tulipa</i> (Lily-flowered Group) 'White Triumphator'
Bed 05	<i>Tulipa</i> (Single Late Group) 'Queen of Night'
Bed 05	<i>Tulipa</i> (Triumph Group) 'National Velvet'
Bed 05	<i>Tulipa</i> (Viridiflora Group) 'Spring Green'
Bed 05	<i>Wisteria floribunda</i> 'Shiro Noda'
Bed 06	<i>Acer davidii</i>
Bed 06	<i>Asarum splendens</i> 'Quicksilver'
Bed 06	<i>Athyrium niponicum</i> var. <i>pictum</i>
Bed 06	<i>Camellia oleifera</i> 'Lu Shan Snow'
Bed 06	<i>Dryopteris x australis</i>
Bed 06	<i>Epimedium stellulatum</i>
Bed 06	<i>Fritillaria meleagris</i> 'Alba'
Bed 06	<i>Heuchera villosa</i> 'Brownies'
Bed 06	<i>Lilium</i> 'Fairy Morning'
Bed 06	<i>Lilium martagon</i> 'Albiflorum'
Bed 06	<i>Matteuccia struthiopteris</i> 'Jumbo'
Bed 06	<i>Ophiopogon japonicus</i>
Bed 06	<i>Ophiopogon planiscapus</i> 'Nigrescens'
Bed 06	<i>Syneilesis aconitifolia</i>
Bed 06	<i>Tulipa</i> (Lily-flowered Group) 'Green Star'
Bed 06	<i>Tulipa</i> (Lily-flowered Group) 'White Elegance'
Bed 06	<i>Tulipa</i> (Lily-flowered Group) 'White Triumphator'
Bed 06	<i>Tulipa</i> (Single Late Group) 'Queen of Night'
Bed 06	<i>Tulipa</i> (Triumph Group) 'National Velvet'
Bed 06	<i>Tulipa</i> (Viridiflora Group) 'Spring Green'
Bed 07	<i>Acer davidii</i>
Bed 07	<i>Asarum splendens</i>
Bed 07	<i>Asarum splendens</i> 'Quicksilver'
Bed 07	<i>Athyrium niponicum</i> var. <i>pictum</i>
Bed 07	<i>Bletilla striata</i> 'Big Bob'
Bed 07	<i>Bletilla striata</i> 'White Pearl'
Bed 07	<i>Calanthe tricarinata</i>
Bed 07	<i>Clematis</i> 'Alba Luxurians'

## garden bed plant list hardy and non-hardy plants growing in the ruin garden, 3/25/26

location	botanical name
Bed 07	Clematis 'Niobe'
Bed 07	Codonopsis pilosula
Bed 07	Corylopsis pauciflora
Bed 07	Dryopteris x australis
Bed 07	Fritillaria meleagris 'Alba'
Bed 07	Lilium 'Fairy Morning'
Bed 07	Lilium martagon 'Albiflorum'
Bed 07	Ophiopogon planiscapus 'Nigrescens'
Bed 07	Osmunda cinnamomea
Bed 07	Schizophragma hydrangeoides 'Roseum'
Bed 07	Tiarella 'Ninja'
Bed 07	Tulipa (Lily-flowered Group) 'Green Star'
Bed 07	Tulipa (Lily-flowered Group) 'White Elegance'
Bed 07	Tulipa (Lily-flowered Group) 'White Triumphator'
Bed 07	Tulipa (Single Late Group) 'Queen of Night'
Bed 07	Tulipa (Triumph Group) 'National Velvet'
Bed 07	Tulipa (Viridiflora Group) 'Spring Green'
Bed 08	Arum italicum ssp. italicum Czech types
Bed 08	Asarum splendens 'Quicksilver'
Bed 08	Athyrium niponicum var. pictum
Bed 08	Carex conica 'Snowline'
Bed 08	Decumaria barbara
Bed 08	Dryopteris x australis
Bed 08	Epimedium 'Great White Hope'
Bed 08	Epimedium 'Pink Champagne'
Bed 08	Fritillaria meleagris 'Alba'
Bed 08	Helleborus niger 'HGC Jacob'
Bed 08	Pinus bungeana
Bed 08	Tiarella cordifolia 'Brandywine'
Bed 08	Tulipa (Lily-flowered Group) 'Green Star'
Bed 08	Tulipa (Lily-flowered Group) 'White Elegance'
Bed 08	Tulipa (Lily-flowered Group) 'White Triumphator'
Bed 08	Tulipa (Single Late Group) 'Queen of Night'
Bed 08	Tulipa (Triumph Group) 'National Velvet'
Bed 08	Tulipa (Viridiflora Group) 'Spring Green'
Bed 09	Acer palmatum 'Bloodgood'
Bed 09	Cephalotaxus harringtonii 'Fastigiata'
Bed 09	Magnolia grandiflora 'Edith Bogue'
Bed 09	Ulmus parvifolia 'Frosty'
Bed 10	Asparagus sp. (coll. Rhodes)
Bed 10	Bletilla striata 'Variegata'
Bed 10	Ilex crenata 'Sky Pencil'
Bed 10	Sagina subulata
Bed 10	Viola 'Bowles' Black'
Bed 11	,
Bed 11	Acorus gramineus 'Ogon'
Bed 11	Clematis [Giselle] = 'Evipo051'
Bed 11	Fritillaria persica
Bed 11	Fritillaria thunbergii
Bed 11	Hakonechloa macra
Bed 11	Hakonechloa macra 'Albovariegata'
Bed 11	Myrica pensylvanica [Bobbee™] = 'Bobzam'
Bed 11	Picea abies 'Pendula'
Bed 11	Quercus glauca
Bed 11	Stewartia monadelphica
Bed 13	Acer davidii ssp. grosseri

## garden bed plant list hardy and non-hardy plants growing in the ruin garden, 3/25/26

location	botanical name
Bed 13	Anemone apennina
Bed 13	Anemone multifida 'Major'
Bed 13	Asparagus sp. (coll. Rhodes)
Bed 13	Cheilanthes lanosa
Bed 13	Iberis sempervirens 'Autumn Beauty'
Bed 13	Iberis sempervirens 'Snowflake'
Bed 13	Parthenium integrifolium
Bed 13	Sedum pallidum var. bithynicum
Bed 13	Selaginella moellendorffii
Bed 13	Viola 'Bowles' Black'
Bed 14	Cephalotaxus harringtonii 'Fastigiata'
Bed 14	Hedera helix (unidentified cultivar)
Bed 14	Sisyrinchium bellum
Bed 15	Acer davidii
Bed 15	Antennaria virginica
Bed 15	Asparagus sp. (coll. Rhodes)
Bed 15	Cheilanthes lanosa
Bed 15	Iberis sempervirens 'Autumn Beauty'
Bed 15	Sedum 'Button'
Bed 15	Sedum hispanicum
Bed 15	Sempervivum 'Commander Hay'
Bed 15	Viola 'Bowles' Black'
Bed 16A	Agapanthus 'Blue Yonder'
Bed 16A	Agastache rupestris 'Glowing Embers'
Bed 16A	Allium hollandicum 'Purple Sensation'
Bed 16A	Allium karataviense
Bed 16A	Anthericum ramosum
Bed 16A	Aster (purple-flowered seedling)
Bed 16A	Bellevalia paradoxa
Bed 16A	Centranthus ruber 'Pretty Betsy'
Bed 16A	Cheilanthes lanosa
Bed 16A	Cistus x fernandesiae 'Anne Palmer'
Bed 16A	Clematis tibetana
Bed 16A	Crinum bulbispermum
Bed 16A	Crocus bilforus ssp. isauricus 'Spring Beauty'
Bed 16A	Desmanthus illinoensis
Bed 16A	Eryngium 'Big Blue'
Bed 16A	Eryngium planum 'Blaukappe'
Bed 16A	Euphorbia characias ssp. wulfenii
Bed 16A	Euphorbia myrsinites
Bed 16A	Festuca glauca [Sea Urchin] = 'Seeigel'
Bed 16A	Festuca glauca 'Boulder Blue'
Bed 16A	Festuca glauca 'Elijah Blue'
Bed 16A	Festuca idahoensis
Bed 16A	Fritillaria persica
Bed 16A	Fritillaria pontica
Bed 16A	Gaura lindheimeri 'Summer Breeze'
Bed 16A	Geranium maculatum 'Espresso'
Bed 16A	Iberis sempervirens [Tahoe™]
Bed 16A	Iberis sempervirens 'Autumn Beauty'
Bed 16A	Iberis sempervirens 'Snowflake'
Bed 16A	Iris (Reticulata Group) 'Pixie'
Bed 16A	Iris (Reticulata Hybrids Group) 'George'
Bed 16A	Iris foetidissima
Bed 16A	Iris histrioides 'Lady Beatrix Stanley'
Bed 16A	Jarava ichu

## garden bed plant list hardy and non-hardy plants growing in the ruin garden, 3/25/26

location	botanical name
Bed 16A	<i>Liatris spicata</i> 'Floristan Weiss'
Bed 16A	<i>Lychnis x arkwightii</i>
Bed 16A	<i>Muscari armeniacum</i> 'Valerie Finnis'
Bed 16A	<i>Muscari azureum</i>
Bed 16A	<i>Narcissus</i> 'Hawera'
Bed 16A	<i>Narcissus</i> 'Jack Snipe'
Bed 16A	<i>Narcissus</i> 'Jetfire'
Bed 16A	<i>Narcissus nanus</i> var. <i>lobularis</i>
Bed 16A	<i>Narcissus</i> 'Pacific Coast'
Bed 16A	<i>Narcissus x odorus</i>
Bed 16A	<i>Nassella tenuissima</i>
Bed 16A	<i>Osmanthus heterophyllus</i> 'Kaori Heme '
Bed 16A	<i>Pancratium illyricum</i>
Bed 16A	<i>Papaver rupifragum</i>
Bed 16A	<i>Parthenium integrifolium</i>
Bed 16A	<i>Polanisia dodecandra</i>
Bed 16A	<i>Schizachyrium scoparium</i> 'Blaze'
Bed 16A	<i>Sedum telephium</i> 'Sunset Cloud'
Bed 16A	<i>Sisyrinchium</i> sp.
Bed 16A	<i>Sternbergia lutea</i>
Bed 16A	<i>Symphyotrichum georgianum</i>
Bed 16A	<i>Symphyotrichum oblongifolium</i> 'October Skies'
Bed 16A	<i>Triteleia laxa</i> [Queen Fabiola] = 'Koningin Fabiola'
Bed 16A	<i>Tulipa</i> (Fosteriana Group) 'Orange Emperor'
Bed 16A	<i>Tulipa</i> (Lily-flowered Group) 'Sarah Raven'
Bed 16A	<i>Tulipa</i> (Single Late Group) 'Queen of Night'
Bed 16A	<i>Tulipa</i> (Triumph Group) 'Abu Hassan'
Bed 16A	<i>Tulipa</i> (Triumph Group) 'National Velvet'
Bed 16A	<i>Tulipa whittallii</i> Species Group
Bed 16A	<i>Yucca angustissima</i>
Bed 16A	<i>Zephyranthes</i> 'Prairie Sunset'
Bed 16B	<i>Agastache</i> (hybrid seedlings)
Bed 16B	<i>Agastache</i> 'Ava'
Bed 16B	<i>Agastache</i> 'Desert Solstice'
Bed 16B	<i>Agastache rupestris</i>
Bed 16B	<i>Allium cernuum</i>
Bed 16B	<i>Allium karataviense</i>
Bed 16B	<i>Anthericum ramosum</i>
Bed 16B	<i>Arachniodes standishii</i>
Bed 16B	<i>Artemisia</i> 'Powis Castle'
Bed 16B	<i>Bellevalia paradoxa</i>
Bed 16B	<i>Bergenia ciliata</i> (Great Dixter form)
Bed 16B	<i>Bergenia ciliata</i> f. <i>ciliata</i>
Bed 16B	<i>Brunnera macrophylla</i> 'Silver Heart'
Bed 16B	<i>Calamintha grandiflora</i>
Bed 16B	<i>Carex buechananii</i> 'Red Rooster'
Bed 16B	<i>Chionanthus retusus</i>
Bed 16B	<i>Clematis</i> 'Brianna'
Bed 16B	<i>Clematis</i> 'Mikolaj Kopernik'
Bed 16B	<i>Crocus bilforus</i> ssp. <i>isauricus</i> 'Spring Beauty'
Bed 16B	<i>Cylindropuntia imbricata</i>
Bed 16B	<i>Desmanthus illinoensis</i>
Bed 16B	<i>Dryopteris crassirhizoma</i>
Bed 16B	<i>Eremurus robustus</i>
Bed 16B	<i>Eryngium planum</i> 'Blaukappe'
Bed 16B	<i>Euphorbia myrsinites</i>

## garden bed plant list hardy and non-hardy plants growing in the ruin garden, 3/25/26

location	botanical name
Bed 16B	<i>Eurybia divaricata</i>
Bed 16B	<i>Festuca glauca</i> 'Elijah Blue'
Bed 16B	<i>Festuca idahoensis</i>
Bed 16B	<i>Fraxinus excelsior</i> 'Pendula'
Bed 16B	<i>Fritillaria persica</i>
Bed 16B	<i>Fritillaria pontica</i>
Bed 16B	<i>Geranium maculatum</i> 'Espresso'
Bed 16B	<i>Geranium phaeum</i> 'Raven'
Bed 16B	<i>Hedera colchica</i> 'Sulphur Heart'
Bed 16B	<i>Heuchera</i> 'Mocha'
Bed 16B	<i>Heuchera villosa</i> var. <i>macrorrhiza</i>
Bed 16B	<i>Hydrangea anomala</i> ssp. <i>petiolaris</i> 'Skylands Giant'
Bed 16B	<i>Hydrangea macrophylla</i> 'Mariesii Silver'
Bed 16B	<i>Hydrangea quercifolia</i> 'Snowflake'
Bed 16B	<i>Iberis sempervirens</i> 'Autumn Beauty'
Bed 16B	<i>Iris</i> (Reticulata Group) 'Pixie'
Bed 16B	<i>Iris</i> (Reticulata Hybrids Group) 'George'
Bed 16B	<i>Leptodermis oblonga</i>
Bed 16B	<i>Liatris elegans</i>
Bed 16B	<i>Liatris microcephala</i>
Bed 16B	<i>Liatris spicata</i> 'Floristan Weiss'
Bed 16B	<i>Lychnis</i> x <i>arkwrightii</i>
Bed 16B	<i>Muscari armeniacum</i> 'Valerie Finnis'
Bed 16B	<i>Narcissus bulbocodium</i> Golden Bells Group
Bed 16B	<i>Narcissus</i> 'Jack Snipe'
Bed 16B	<i>Narcissus</i> 'Jetfire'
Bed 16B	<i>Narcissus nanus</i> var. <i>lobularis</i>
Bed 16B	<i>Narcissus</i> 'Pacific Coast'
Bed 16B	<i>Nassella tenuissima</i>
Bed 16B	<i>Ophiopogon planiscapus</i> 'Nigrescens'
Bed 16B	<i>Papaver rupifragum</i>
Bed 16B	<i>Papaver rupifragum</i> 'Flore Pleno'
Bed 16B	<i>Parthenium integrifolium</i>
Bed 16B	<i>Penstemon tubaeflorus</i>
Bed 16B	<i>Ruscus aculeatus</i>
Bed 16B	<i>Santolina chamaecyparissus</i>
Bed 16B	<i>Saxifraga stolonifera</i>
Bed 16B	<i>Schizachyrium scoparium</i> 'Blaze'
Bed 16B	<i>Sedum glaucophyllum</i>
Bed 16B	<i>Sedum rupestre</i> 'SUNSPARKLER® 'Plum Dazzled''
Bed 16B	<i>Silene virginica</i>
Bed 16B	<i>Silphium mohrii</i>
Bed 16B	<i>Sisyrinchium</i> sp.
Bed 16B	<i>Sternbergia lutea</i>
Bed 16B	<i>Stokesia laevis</i> 'Omega Skyrocket'
Bed 16B	<i>Symphyotrichum oblongifolium</i> 'October Skies'
Bed 16B	<i>Triteleia laxa</i> [Queen Fabiola] = 'Koningin Fabiola'
Bed 16B	<i>Tulipa</i> (Fringed Group) 'Vincent van Gogh'
Bed 16B	<i>Tulipa</i> (Lily-flowered Group) 'Sarah Raven'
Bed 16B	<i>Tulipa</i> (Single Late Group) 'La Paz'
Bed 16B	<i>Tulipa</i> (Single Late Group) 'Queen of Night'
Bed 16B	<i>Tulipa</i> (Triumph Group) 'National Velvet'
Bed 16B	<i>Tulipa</i> (Triumph Group) 'Paul Scherer'
Bed 16C	<i>Bellevalia paradoxa</i>
Bed 16C	<i>Bergenia ciliata</i> (Great Dixter form)
Bed 16C	<i>Bergenia ciliata</i> f. <i>ciliata</i>

## garden bed plant list hardy and non-hardy plants growing in the ruin garden, 3/25/26

location	botanical name
Bed 16C	<i>Brunnera macrophylla</i> 'Silver Heart'
Bed 16C	<i>Cercis canadensis</i> var. <i>texensis</i> 'Texas White'
Bed 16C	<i>Dryopteris crassirhizoma</i>
Bed 16C	<i>Geranium phaeum</i> 'Raven'
Bed 16C	<i>Heuchera</i> 'Mocha'
Bed 16C	<i>Narcissus bulbocodium</i> Golden Bells Group
Bed 16C	<i>Narcissus</i> x <i>odoratus</i>
Bed 16C	<i>Ruscus aculeatus</i>
Bed 40	<i>Acer palmatum</i> 'Sango kaku'
Bed 40	<i>Alchemilla mollis</i> 'Robusta'
Bed 40	<i>Asclepias tuberosa</i>
Bed 40	<i>Asclepias tuberosa</i> 'Hello Yellow'
Bed 40	<i>Chamaecyparis obtusa</i> 'Fastigiata'
Bed 40	<i>Clematis</i> [Samaritan Jo] = 'Evipo075'
Bed 40	<i>Clematis</i> 'Dark Eyes'
Bed 40	<i>Clematis</i> 'Lasurstern'
Bed 40	<i>Hydrangea anomala</i> ssp. <i>petiolaris</i>
Bed 40	<i>Hydrangea paniculata</i> 'Phantom'
Bed 40	<i>Liatris scariosa</i> var. <i>novae-angliae</i>
Bed 40	<i>Picea abies</i> 'Pendula'
Bed 40	<i>Pityopsis falcata</i>
Bed 40	<i>Sporobolus heterolepis</i>
Bed 41	<i>Platanus x acerifolia</i>
Bed 41	<i>Quercus rubra</i>
Bed 41	<i>Tilia americana</i>
Bed 41	<i>Ulmus americana</i> 'Princeton'
Bed 42	<i>Baptisia australis</i>
Bed 42	<i>Baptisia australis</i> var. <i>minor</i>
Bed 42	<i>Clematis</i> 'Huldine'
Bed 42	<i>Clematis</i> 'Little Bas'
Bed 42	<i>Clematis</i> 'Mikolaj Kopernik'
Bed 42	<i>Hydrangea paniculata</i> 'Phantom'
Bed 42	<i>Liatris microcephala</i>
Bed 42	<i>Lilium pumilum</i>
Bed 42	<i>Picea abies</i> 'Pendula'
Bed 42	<i>Prunus</i> 'Dream Catcher'
Bed 42	<i>Rhododendron calendulaceum</i> #23
Bed 42	<i>Rhododendron calendulaceum</i> (Mt. Caras seedling)
Bed 42	<i>Silphium mohrii</i>
Bed 42	<i>Sporobolus heterolepis</i>
Bed 42	<i>Tulipa</i> (Single Late Group) 'Menton'
Bed 43	<i>Hedera colchica</i> 'Sulphur Heart'
Bed 43	<i>Helleborus</i> x <i>hybridus</i> (Ballard's Group)
Bed 43	<i>Helleborus</i> x <i>nigercors</i> 'Honeyhill Joy'
Bed 43	<i>Hydrangea anomala</i> ssp. <i>petiolaris</i>
Bed 43	<i>Silene regia</i>
Bed 43	<i>Taxodium distichum</i> var. <i>imbricatum</i>
Bed 46	<i>Anemone apennina</i>
Bed 46	<i>Anemone multifida</i> 'Major'
Bed 46	<i>Bergenia ciliata</i> (Great Dixter form)
Bed 46	<i>Buxus sempervirens</i> 'Vardar Valley'
Bed 46	<i>Campsis radicans</i> 'Jersey Peach'
Bed 46	<i>Carex dolichostachya</i> 'Kaga Nishiki'
Bed 46	<i>Clematis</i> [Amethyst Beauty] = 'Evipo043'
Bed 46	<i>Clematis</i> 'Krolowa Jadwiga'
Bed 46	<i>Cyclamen hederifolium</i> (silver leaf)

## garden bed plant list hardy and non-hardy plants growing in the ruin garden, 3/25/26

location	botanical name	
Bed 46	<i>Cyclamen hederifolium</i> (well-marked leaves, white flowers)	
Bed 46	<i>Cyclamen purpurascens</i>	
Bed 46	<i>Cynara cardunculus</i> 'Florist Candy'	
Bed 46	<i>Hakonechloa macra</i> 'Albovariegata'	
Bed 46	<i>Hedera helix</i> 'Medusa'	
Bed 46	<i>Helleborus niger</i> 'HGC Jacob'	
Bed 46	<i>Helleborus x hybridus</i> (Ballard's Group)	
Bed 46	<i>Hydrangea anomala</i> ssp. <i>petiolaris</i>	
Bed 46	<i>Rhododendron</i> 'Joseph Hill'	
Bed 46	<i>Sambucus nigra</i> 'Albopunctata'	
Bed 46	<i>Thalictrum delavayi</i> 'Album'	
Bed 46	<i>Tulipa</i> (Triumph Group) 'Abu Hassan'	
Bed 48	<i>Acer palmatum</i> 'Sango kaku'	
Bed 48	<i>Acer saccharum</i>	
Bed 48	<i>Aesculus pavia</i>	
Bed 48	<i>Allium hollandicum</i> 'Purple Sensation'	
Bed 48	<i>Asclepias tuberosa</i>	
Bed 48	<i>Asclepias tuberosa</i> 'Hello Yellow'	
Bed 48	<i>Athyrium niponicum</i> var. <i>pictum</i>	
Bed 48	<i>Baptisia australis</i>	
Bed 48	<i>Baptisia australis</i> var. <i>minor</i>	
Bed 48	<i>Carex bicknellii</i>	
Bed 48	<i>Carex cherokeensis</i>	
Bed 48	<i>Carex socialis</i>	
Bed 48	<i>Clematis</i> [I Am Happy] = 'Zoiamha'	
Bed 48	<i>Clematis</i> [Samaritan Jo] = 'Evipo075'	
Bed 48	<i>Clematis</i> 'Laura'	
Bed 48	<i>Clematis</i> 'Pink Delight'	
Bed 48	<i>Crocus tommasinianus</i>	
Bed 48	<i>Datura innoxia</i>	
Bed 48	<i>Dryopteris x australis</i>	
Bed 48	<i>Epimedium</i> 'Pink Champagne'	
Bed 48	<i>Epimedium</i> sp. 'Tarantula'	
Bed 48	<i>Hakonechloa macra</i> 'Albovariegata'	
Bed 48	<i>Hepatica nobilis</i> var. <i>nobilis</i>	
Bed 48	<i>Heuchera villosa</i>	
Bed 48	<i>Hydrangea paniculata</i> [Quick Fire™] = 'Bulk'	
Bed 48	<i>Hydrangea paniculata</i> 'Phantom'	
Bed 48	<i>Liatris microcephala</i>	
Bed 48	<i>Lycoris</i> 'Sky Over Sky'	
Bed 48	<i>Panicum virgatum</i> 'Dallas Blues'	
Bed 48	<i>Parthenocissus quinquefolia</i>	
Bed 48	<i>Peucedanum terebinthaceum</i> var. <i>terebinthaceum</i>	
Bed 48	<i>Picea abies</i> 'Pendula'	
Bed 48	<i>Rhododendron calendulaceum</i>	
Bed 48	<i>Rhododendron calendulaceum</i> (Hooper Bald)	
Bed 48	<i>Scilla litardieri</i>	
Bed 48	<i>Silphium mohrii</i>	
Bed 48	<i>Sporobolus heterolepis</i>	
Bed 48	<i>Taxodium distichum</i> var. <i>imbricatum</i>	
Bed 48	<i>Tiarella cordifolia</i> 'Brandywine'	
Bed 48	<i>Tulipa</i> (Single Late Group) 'Menton'	
Bed 48	<i>Tulipa</i> (Triumph Group) 'Bastogne'	
Bed 48	<i>Tulipa</i> (Triumph Group) 'National Velvet'	
Bluestone Trough	<i>Fritillaria persica</i>	Seasonal / Hardy
Bluestone Trough	<i>Viola cornuta</i> [Sorbet® XP Neptune]	Seasonal / Annual

## garden bed plant list

 hardy and non-hardy plants growing in the ruin garden, 3/25/26

location	botanical name
Broken Pot	Fritillaria persica
Broken Pot	Erysimum 'Fire King' Seasonal / Annual
Wall Pocket	Juniperus horizontalis 'Wiltonii'
Wall Pocket	Juniperus procumbens 'Nana'
Wall Pocket	Microbiota decussata
Wall Top	Jasminum nudiflorum
Wall Top	Polypodium vulgare 'Uulong Island'
Wall Top	Sedum album
Wall Top	Sedum rupestre 'Angelina'
Wall Top	Sedum rupestre 'Blue Spruce'
Wall Top	Sedum ternatum 'Larinem Park'